

Label holders - type MDS



Label holders are used to facilitate identification of the goods in the baskets. Users can easily find what they are looking for without having to rummage through the baskets.

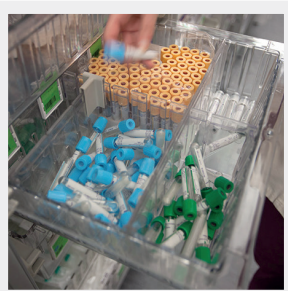
Our label holders can be used in either a vertical or horizontal position and can be affixed to both the baskets and the PC dividers.

Label holders allow you to clearly label the contents of trays and baskets so that users can swiftly find what they are looking for without having to pull out all the trays or baskets.



» Working in an organised fashion

Label holders allow you to easily label trays and baskets that have been subdivided into various sections. This makes it easier to organise the contents and to optimally subdivide your trays and baskets.



» A clear overview

Label holders allow you to clearly label the contents of trays and baskets so that users can swiftly find what they are looking for.

Multifix label holders can be affixed in an upright or horizontal position.

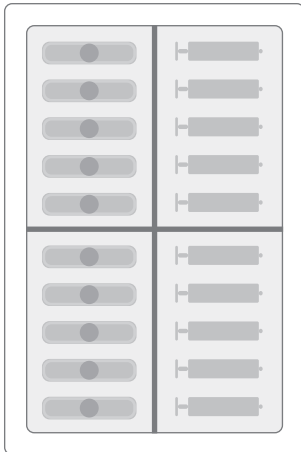


» Compatible with all our trays and baskets

Our label holders can quickly and easily be affixed to all our trays, baskets and PC dividers.

Multifix label holders consist of 3 parts: a label holder, a mounting plate and a label (sold separately). This makes the label holder extra secure.

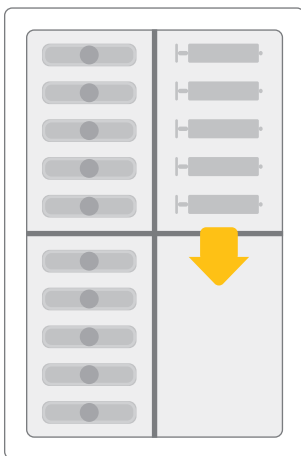
» How does the type MDS FIFO system work?



» Both sections full

In the First in, First out system, 2 sections are used to store goods in a tray or basket. Goods are invariably taken from the front section until it is empty before the front section is filled again with the goods from the back. This is also the time to order extra supplies.

When both the front and back section are full, you have plenty of goods in stock.



» Front section empty

Once the front section is empty you re-stock it with the goods from the back section. This is also the time to order fresh supplies.



» Using label holders

In the FIFO system, the label holders contain double-sided labels, the face to indicate that the goods are in stock, the back to indicate that the goods in question need to be reordered. Once the back section is empty, the label is turned around to indicate that new supplies must be ordered.

» Red label

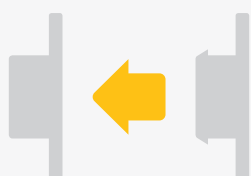
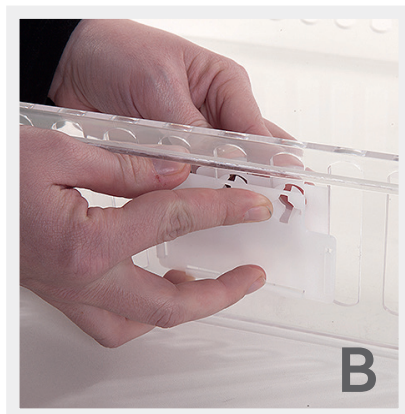
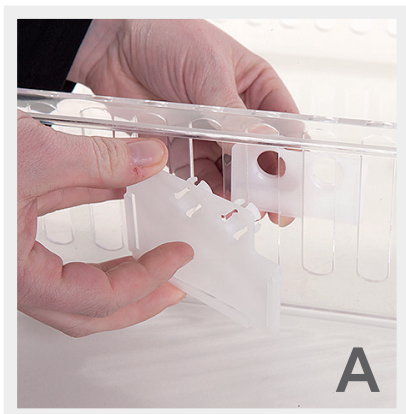
The red label tells you that you must order more supplies.

New stock must be put in the back section so that the oldest stock is always used first.

» Affixing Multifix type MDS label holders

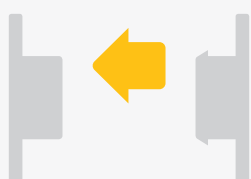
Our Multifix label holders can be affixed to the baskets and PC dividers in an upright and in a horizontal position. The label holders come with a front and back mount to ensure that they remain firmly in place.

Label holders are positioned in between the grooves of the baskets so that they do not become detached when you take a box out of the baskets, which could easily happen if the label holder was to be affixed to the module frame.



» Affixing label holders to baskets

To affix a label holder to a basket, click back plate (A) to the inside and front plate (B) to the outside into the openings of the basket.



» Affixing label holders to the dividers

To affix a label holder to a divider, turn the back plate around (C), click both together (D) and jointly push the two over the divider (E). Slip a label into the holder (F).

» Label holders - type MDS



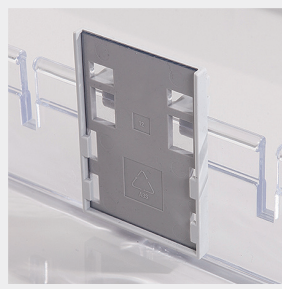
» Multifix small

Article Number	Description	Ext. Dimensions	Option
15008 00018	Plastic holder	63 x 45 mm	-
15008 00020	Mounting plate	-	-
15008 00021	White insert	60 x 40 mm	Colours on request
15002 00002	Clip for the attachment of multifix on baskets		



» Multifix large

Article Number	Description	Ext. Dimensions	Option
15008 00019	Plastic holder	90 x 58 mm	-
15008 00020	Mounting plate	-	-
15008 00013	White insert	82 x 50 mm	Colours on request
15002 00002	Clip for the attachment of multifix on baskets		



» Plastic label holder

Article Number	Description	Ext. Dimensions
15008 00010	Label holder	40 x 60 mm
15008 00011	Transparent insert	40 x 60 mm